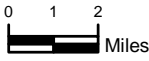
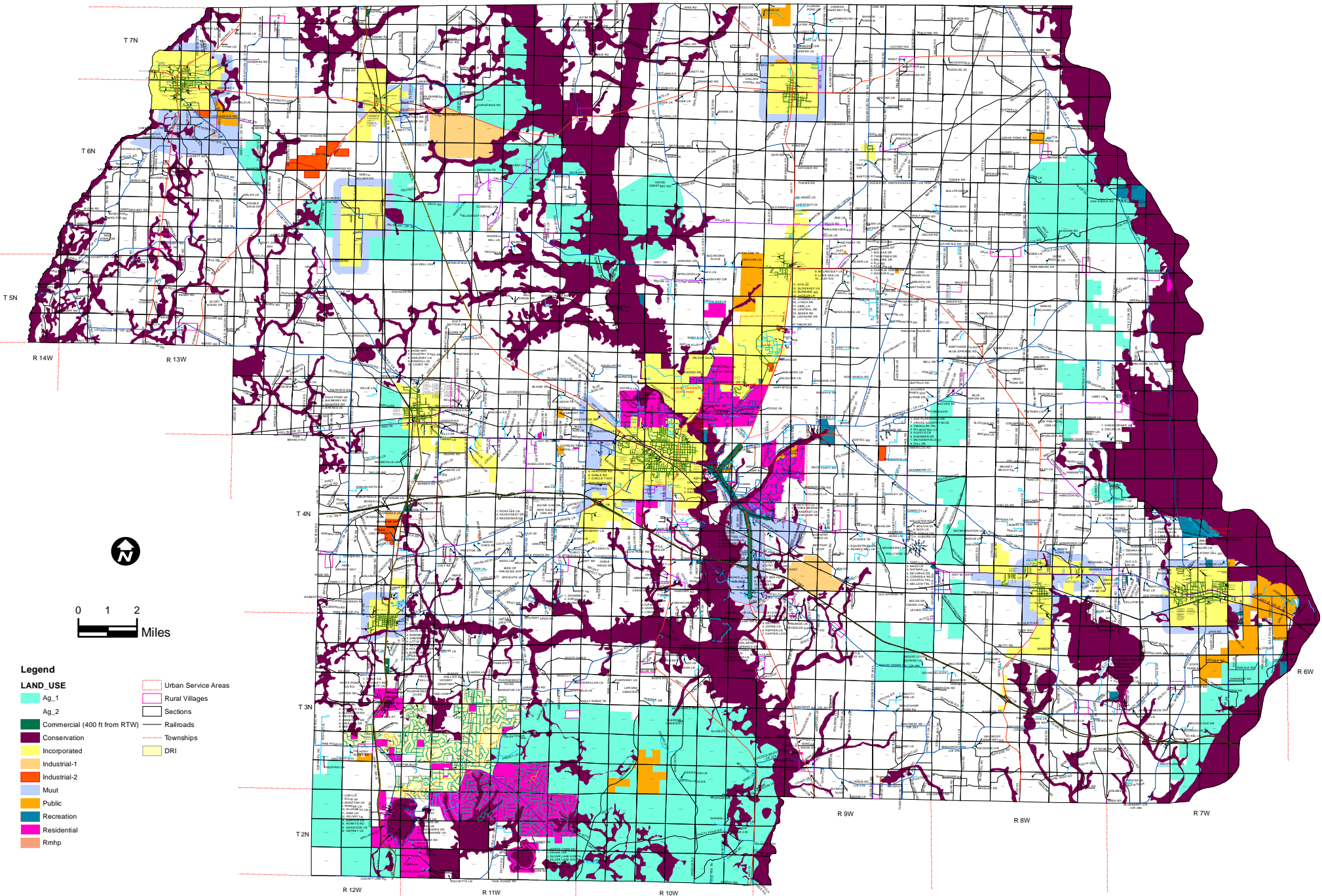


Map 1
 Jackson County Comprehensive Plan
 2030 Future Land Use Map

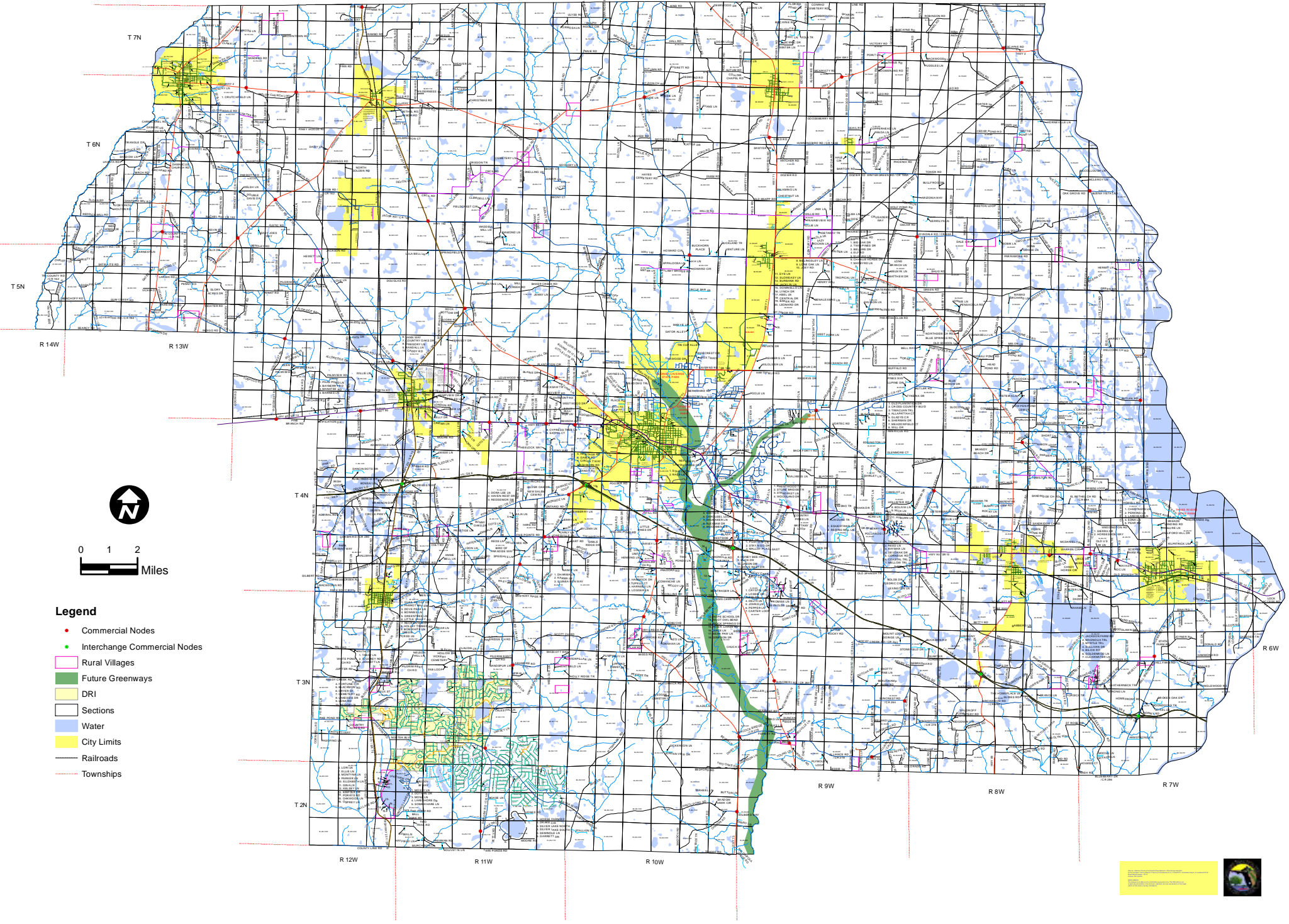


Legend

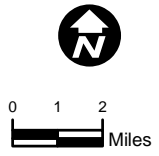
- | | |
|------------------------------|---------------------|
| LAND_USE | Urban Service Areas |
| Ag_1 | Rural Villages |
| Ag_2 | Sections |
| Commercial (400 ft from RTW) | Railroads |
| Conservation | Townships |
| Incorporated | DRI |
| Industrial-1 | |
| Industrial-2 | |
| Muut | |
| Public | |
| Recreation | |
| Residential | |
| Rmhp | |



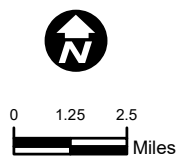
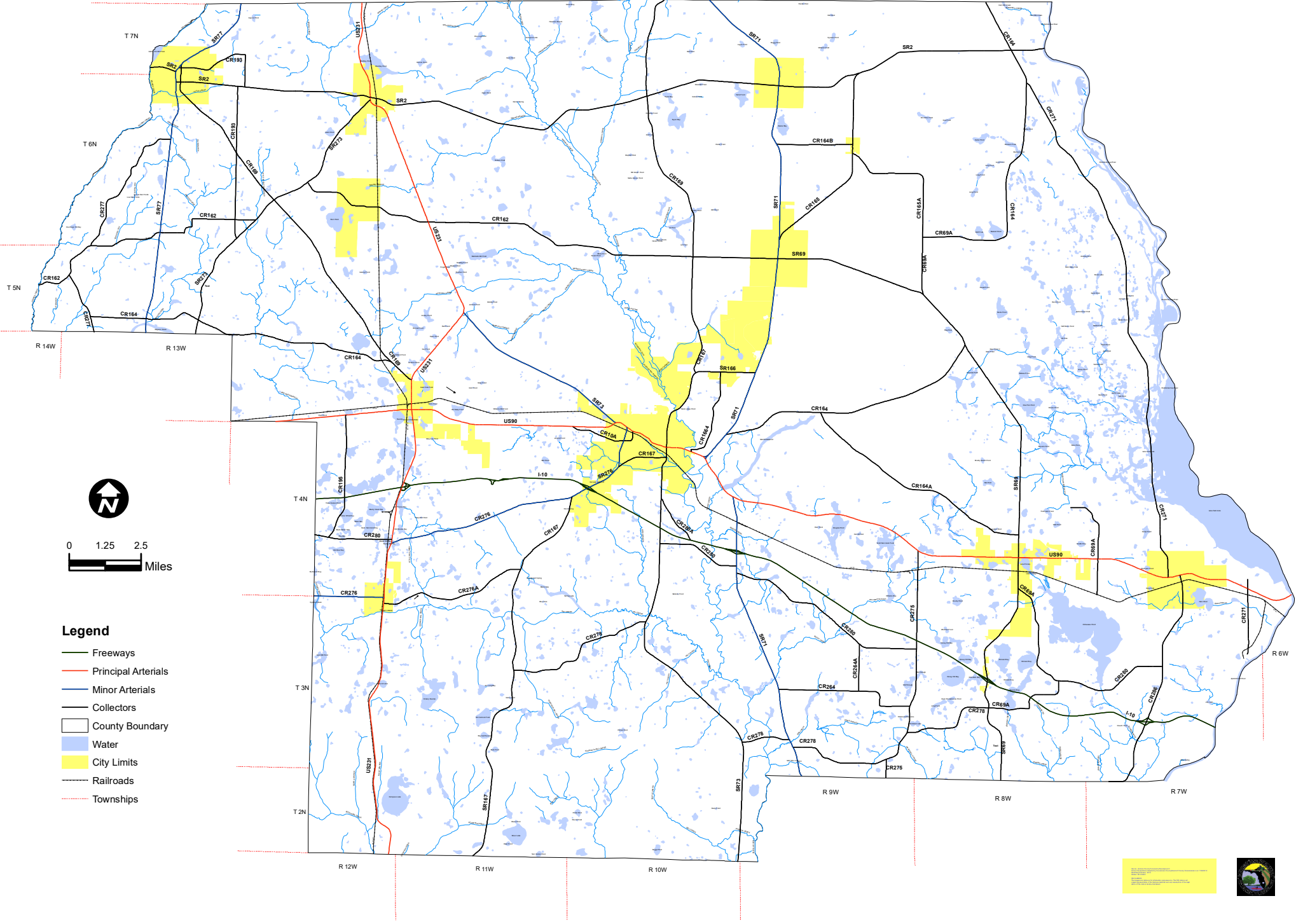
Map 2
Jackson County Comprehensive Plan
Overlays District Map



- Legend**
- Commercial Nodes
 - Interchange Commercial Nodes
 - Rural Villages
 - ▭ Future Greenways
 - ▭ DRI
 - ▭ Sections
 - ▭ Water
 - ▭ City Limits
 - Railroads
 - Townships



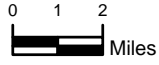
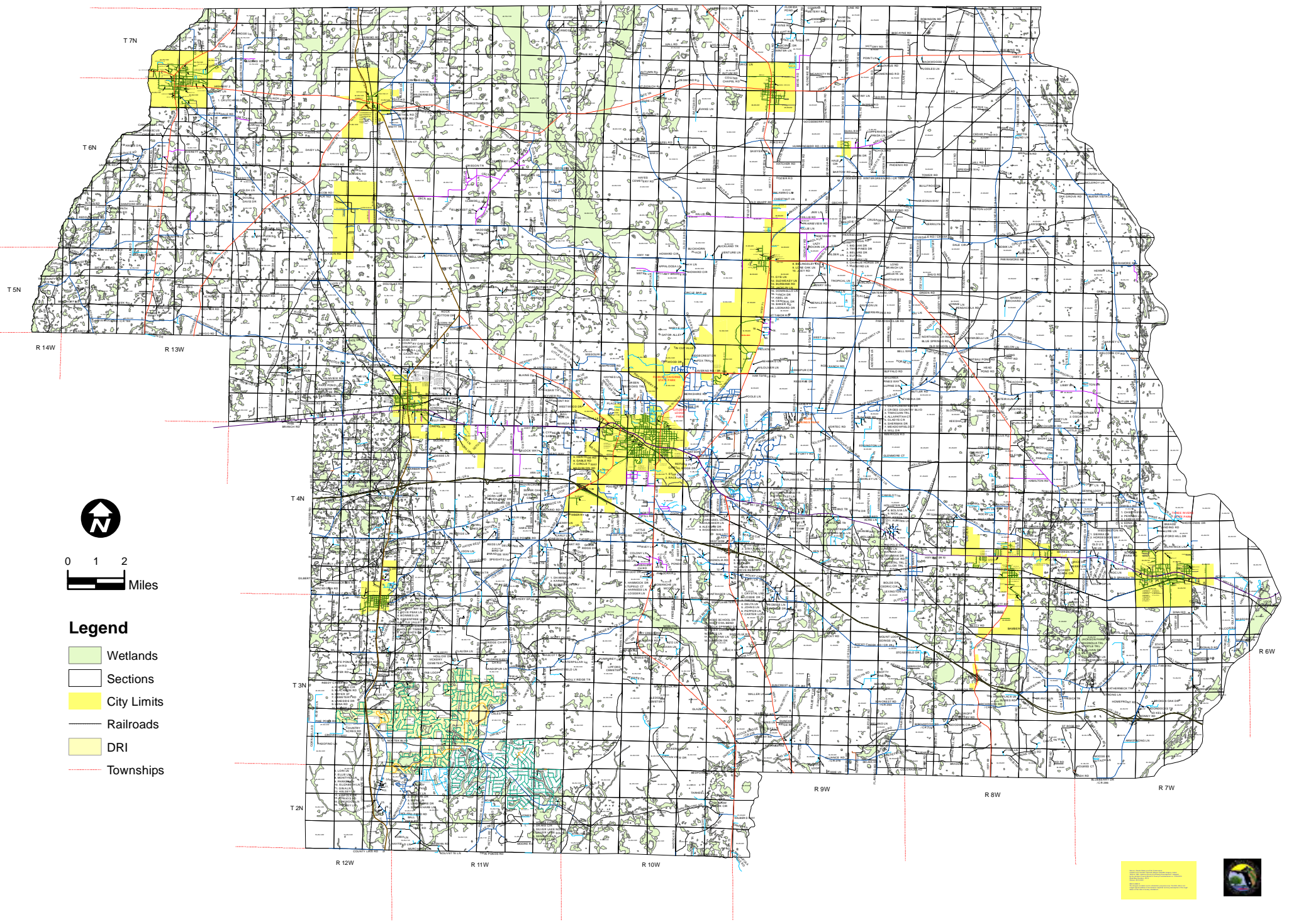
Map 3
 Jackson County Comprehensive Plan
 Future Transportation System



- Legend**
- Freeways
 - Principal Arterials
 - Minor Arterials
 - Collectors
 - County Boundary
 - Water
 - City Limits
 - Railroads
 - Townships



Map 4
Jackson County Comprehensive Plan
Wetlands Map

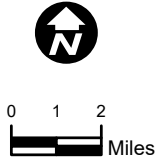
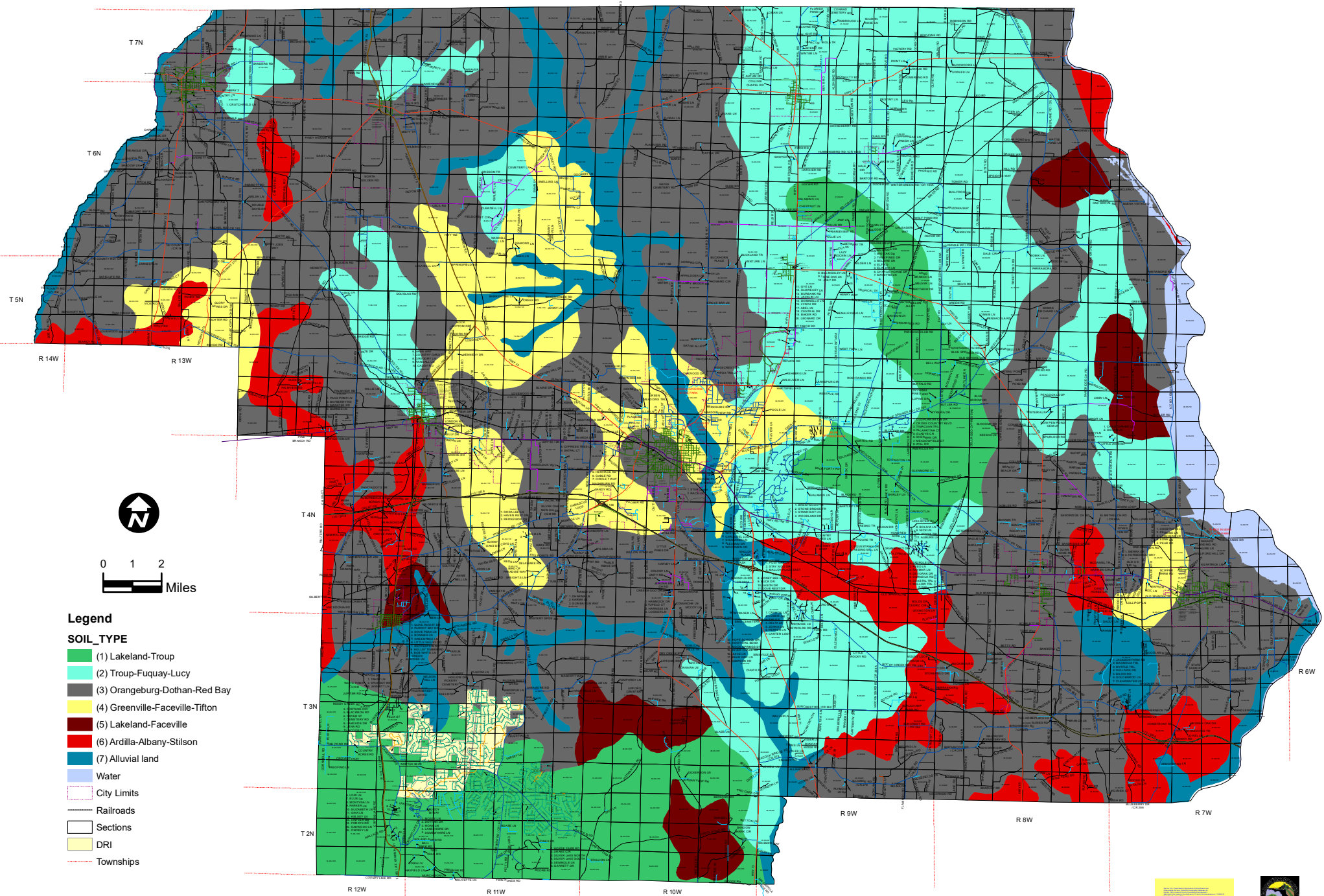


Legend

- Wetlands
- Sections
- City Limits
- Railroads
- DRI
- Townships



Map 5
Jackson County Comprehensive Plan
General Soils Map



Legend

SOIL_TYPE

- (1) Lakeland-Troup
- (2) Troup-Fuquay-Lucy
- (3) Orangeburg-Dothan-Red Bay
- (4) Greenville-Faceville-Tifton
- (5) Lakeland-Faceville
- (6) Ardilla-Albany-Stilson
- (7) Alluvial land
- Water
- City Limits
- Railroads
- Sections
- DRI
- Townships

